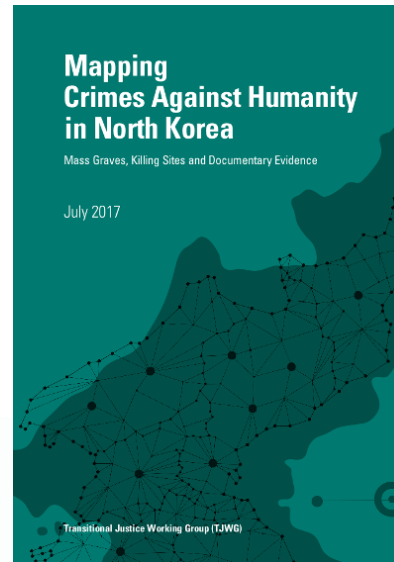

DIGITAL SECURITY

OUR PROJECTS

MAPPING CRIMES
AGAINST
HUMANITY IN
NORTH KOREA

MISSING PERSONS
CENTRAL
REPOSITORY

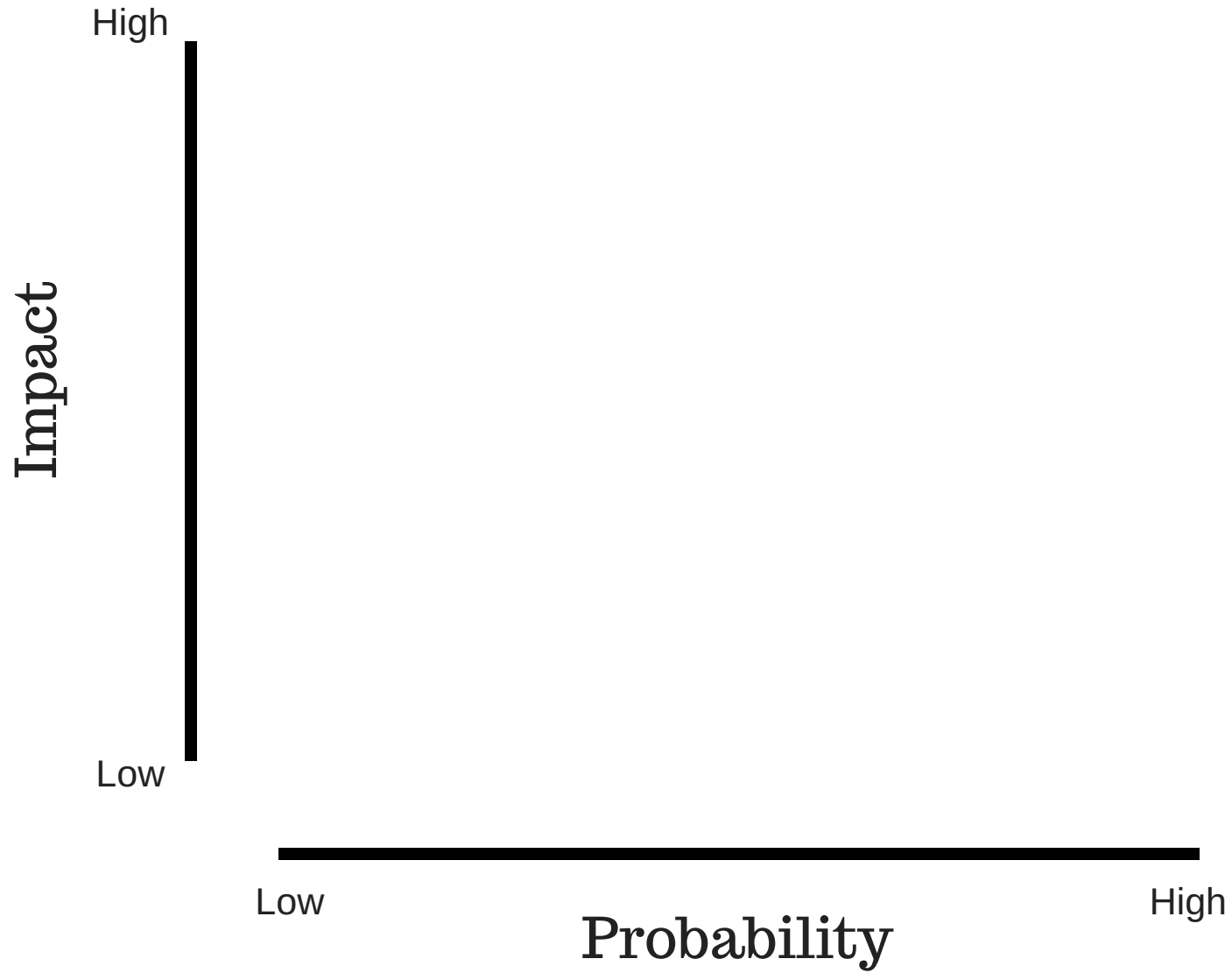
ACCESS
ACCOUNTABILITY



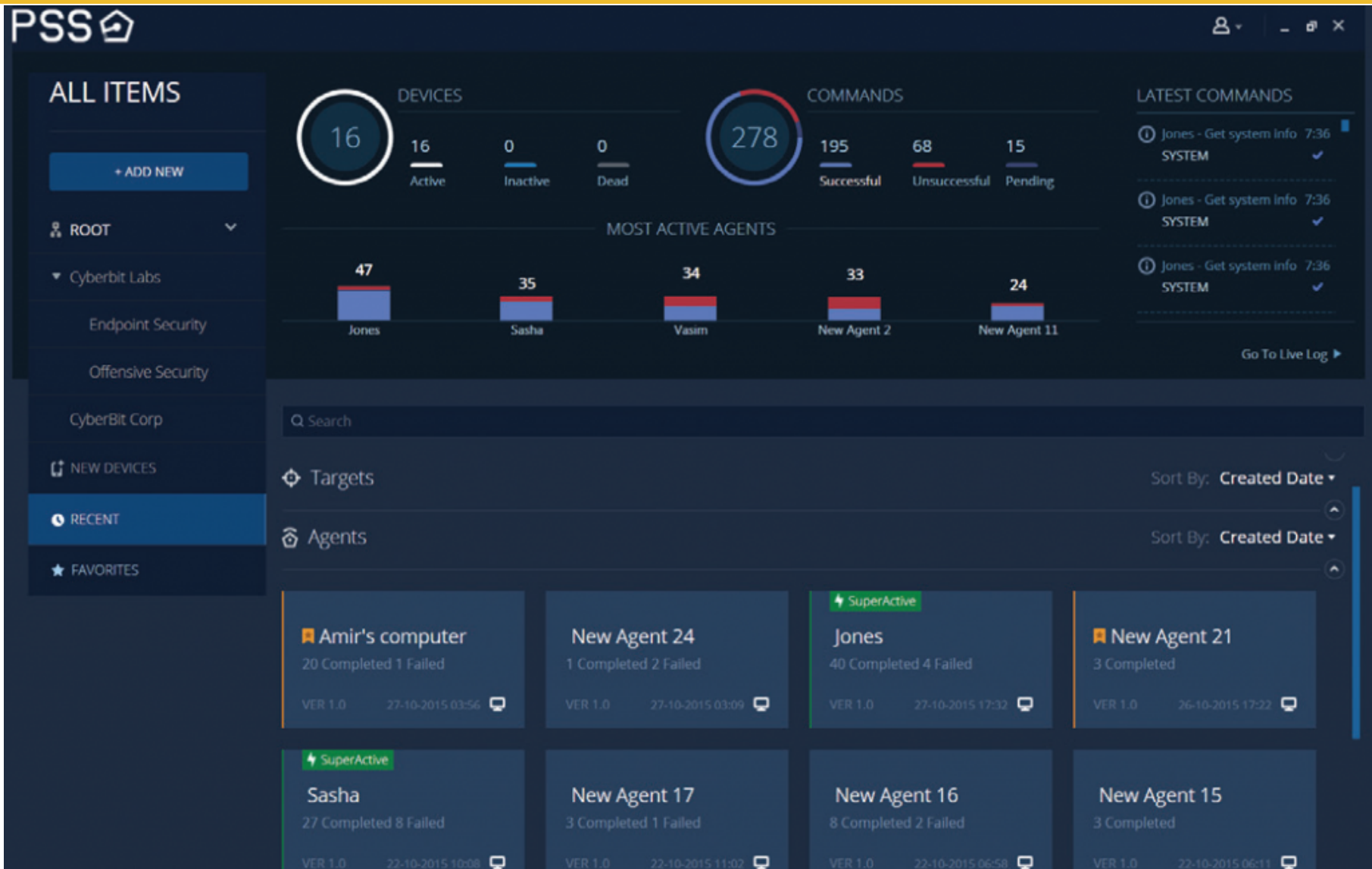
TRANSITIONAL
J U S T I C E
WORKING GROUP

Access 
Accountability

THREAT MODELLING



SPYWARE



SPYWARE

EXAMPLE: DEMO GIVEN TO "SECRET POLICE" IN UZBEKISTAN

TESTING AT HOTEL

● 11:23p - 1:10a
● 8:46a - 9:06a



RADISSON BLU
TASHKENT

DEMO DAY ONE

● 3:40p-3:45p
● 5:16p-6:24p



**NATIONAL
SECURITY SERVICE**
TASHKENT

DEMO DAY TWO

● 12:09p-12:41p
● 2:27p-2:45p



CYBERBIT DEMOS

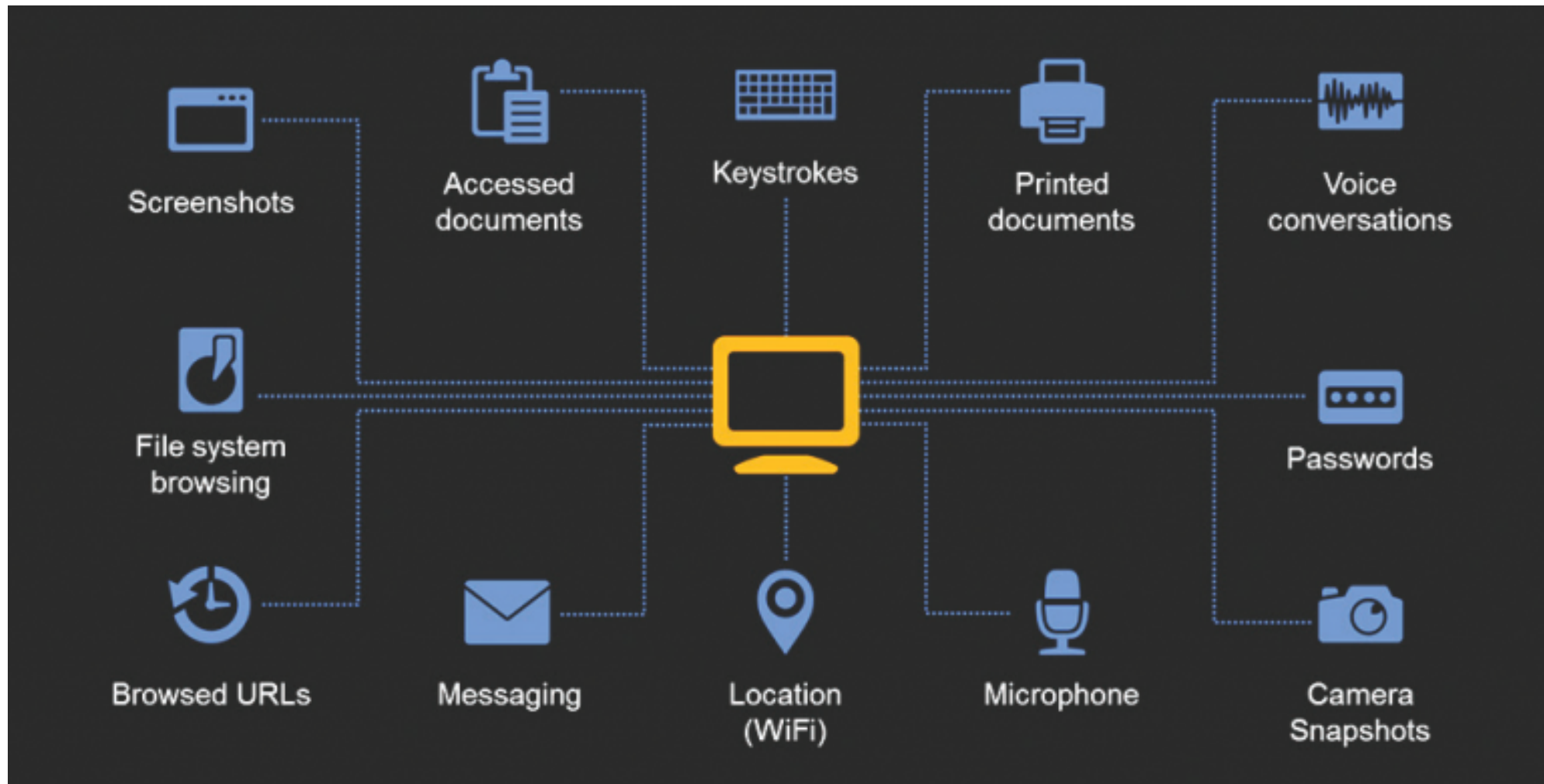
Observed in 2016-2017

Cyberbit employees regularly travel to give demonstrations of the Cyberbit spyware. In some cases they appear to test or demo the spyware from their hotels. Some of the countries have dubious human rights records.

MARCZAK, ALEXANDER, MCKUNE
SCOTT-RAILTON, DEIBERT

CITIZEN LAB 2017

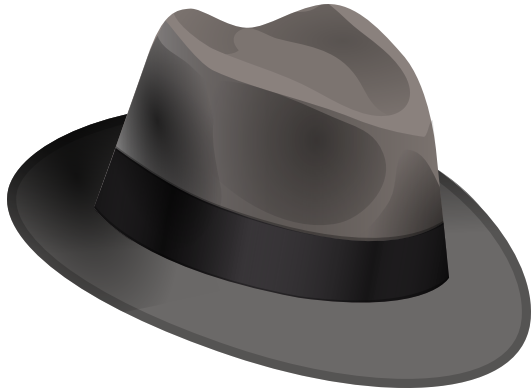
SPYWARE



FIX THE BIGGEST PROBLEMS FIRST

FIX THE BIGGEST PROBLEMS FIRST

- Software Vulnerabilities
- Securing Accounts



WE FACE

- Malware
- Corporate Information Gathering
- Ransomware
- Identity Theft

PLUS

- Targeted Attacks

SOLUTIONS

- Beware of installing malware
- Maintain Updates
- Antivirus software - **Avast**
- Malware detection - **Malwarebytes**
- *If you don't use it, uninstall it*

SECURING YOUR ACCOUNTS

SECURING YOUR ACCOUNTS

PASSWORDS AND MULTI-FACTOR AUTHENTICATION

SPEAR PHISHING ATTACK

----- Forwarded message -----

From: **Google Accounts Team** <no-reply@accounts.gmail.com>

Date: 4 January 2018 at 03:00

Subject: Someone had your password

To:



Someone has your password

Hi [redacted],

Someone just used your password to try to sign in to your Google Account

[redacted]

Detail:

Thursday, Jan 04, 2018 03:00 AM (UTC)

Boston, MA, USA*

Google stopped this sign-in try, but you should review your recently used devices:

[REVIEW YOUR DEVICES NOW](#)

The Google Accounts team

This email can't receive replies. For more information, visit the [Google Accounts Help Center](#).

You received this email service announcement to update you about important changes to your Google product or account.

SPEAR PHISHING ATTACK

Sign in
with your Google Account

Email or phone
username@test@gmail.com

[Forgot email?](#)

[More options](#)

NEXT

English (United States) ▼

[Help](#) [Privacy](#) [Terms](#)

LIMITATIONS

- doesn't protect other people's machines
- state-level attacks
- backdoors
- holes in software
- fire, flood, loss, theft
- physical security

Locking the door when the thief is in the house

PASSWORD CHECK-UP!

Take a step forward if you answer *yes*

WHAT MAKES A GOOD PASSWORD?

S.U.R.E

S.U.R.E

SENTENCE-LENGTH

Passwords should be pass phrases
- at least 5 words long -

S.U.R.E

U **N** **I** **Q** **U** **E**

One password for each account

S.U.R.E

RANDOM

- not a phrase in publication -
- should not come from your life -
- uses special characters to break up words -

S.U.R.E

EEASY TO REMEMBER

Easy to crack

Hard to crack, easy
to remember

Hard to remember

SOLUTION:

PASSWORD MANAGERS

*Security isn't just about technology,
it's about human behaviour*

KEEPASS



LastPass ****



MULTI-FACTOR AUTHENTICATION

SECURING YOUR ACCOUNTS

SOLUTION:

2-FACTOR AUTHENTICATORS

FREE OTP



**GOOGLE
AUTHENTICATOR**



NEXT

STEPS

<https://www.accessnow.org>

ENCRYPT:

DATA AT REST

phones, computers, backups

DATA IN TRANSIT

chat apps, email

QUESTIONS

THANK YOU!

info@tjwg.org
<https://www.tjwg.org>



TRANSITIONAL
J U S T I C E
WORKING GROUP

Access 
Accountability